

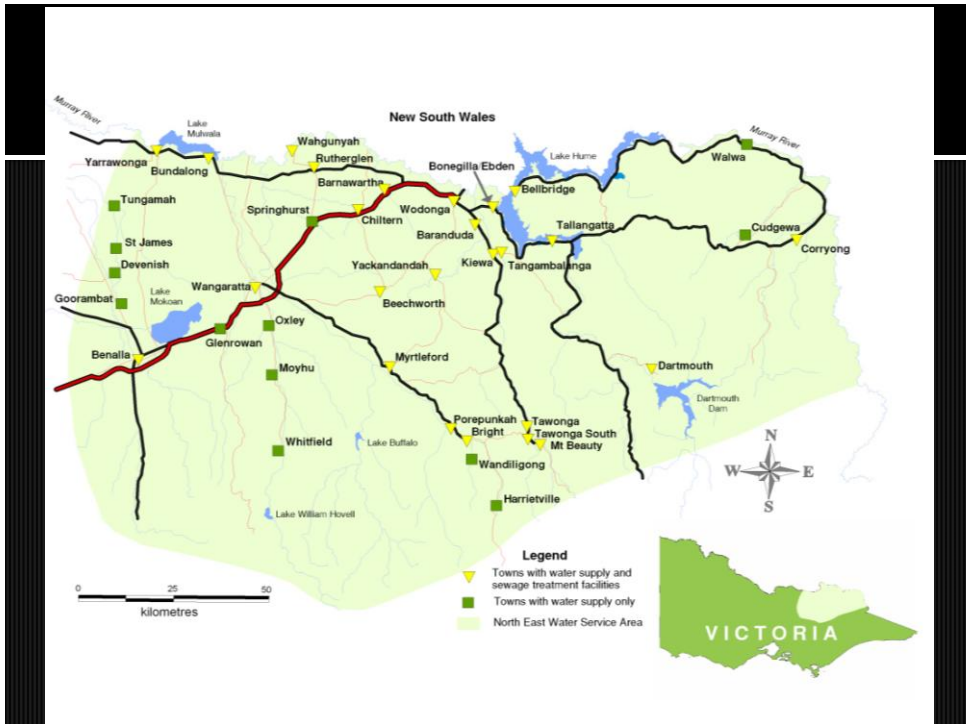
One Resource – Holistic Water Service Delivery

AIG Albury
25th November 2010

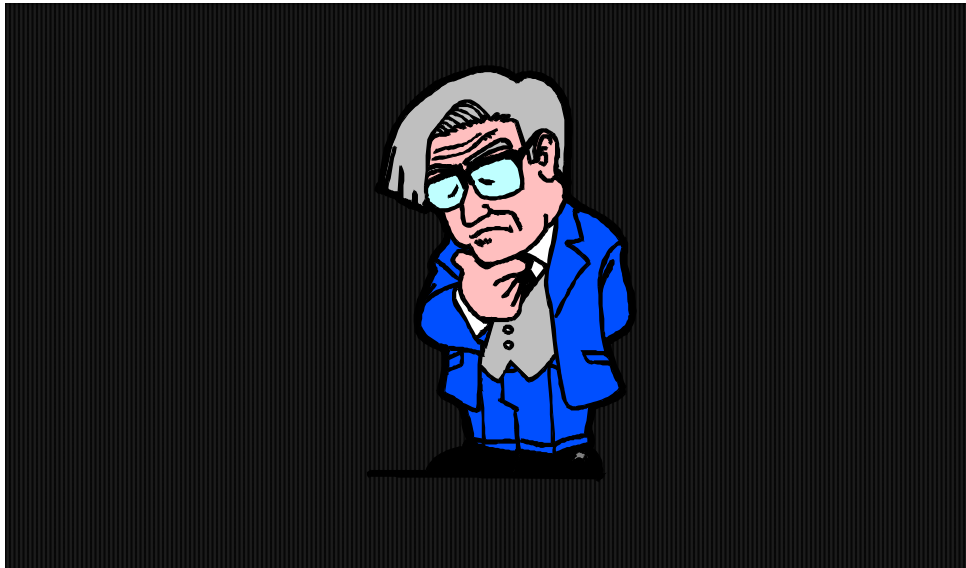


North East Water - Overview

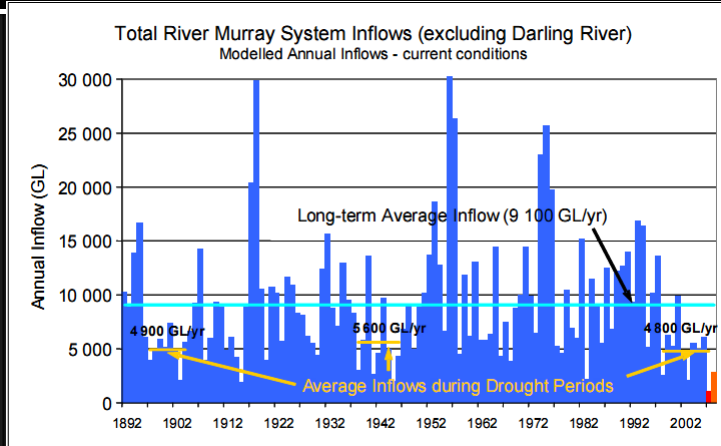
- ❖ 13 Regional Urban Water Corporations
- ❖ 130 FTE
- ❖ 39 cities, towns and villages
- ❖ Deliver 20 GL to a population of > 100,000
- ❖ 2,260 km water / sewer pipes
- ❖ Revenue \$40 million
- ❖ \$30 million Capex
- ❖ Skill-based Board



Project Drivers

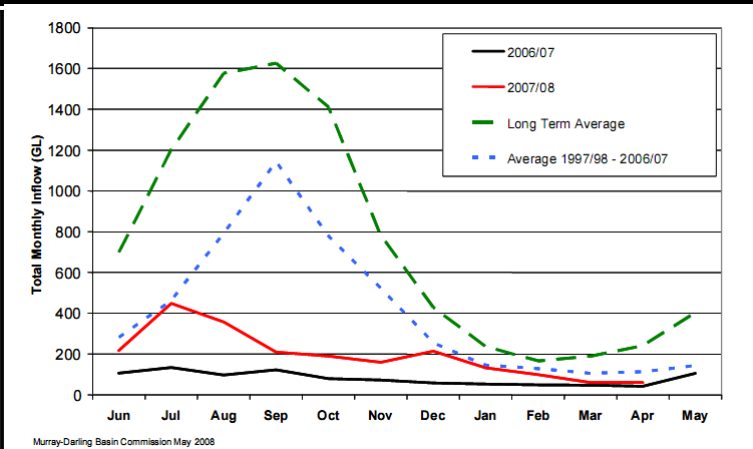


Low Murray Inflows



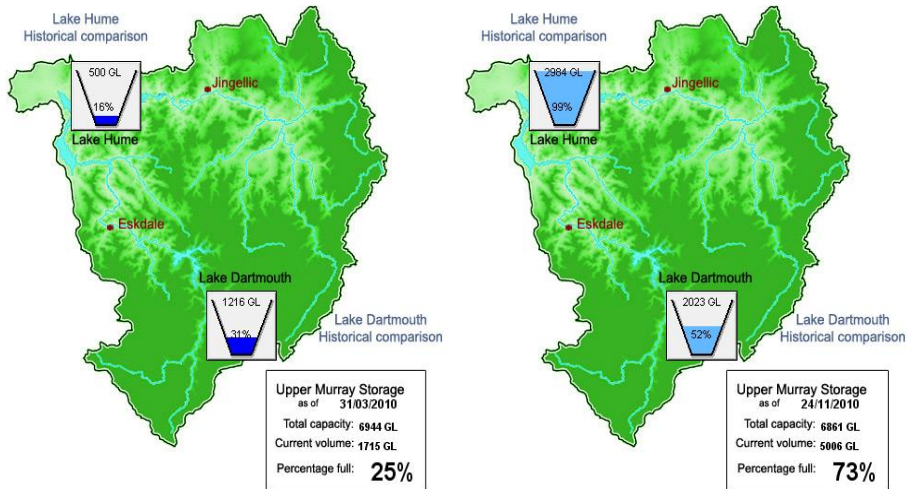
Modern Agriculture Under Stress – Lessons from the Murray-Darling
MDBC Publication Number: 46/08

Failure of Winter Rains



Modern Agriculture Under Stress – Lessons from the Murray-Darling
MDBC Publication Number: 46/08

How things have changed

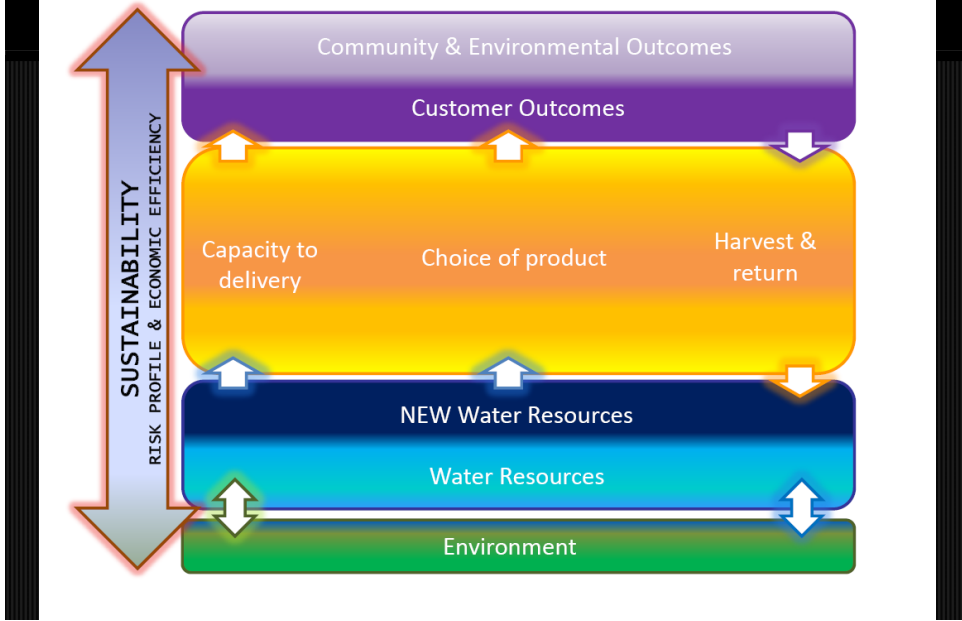


One Resource Pilot Project guiding principles

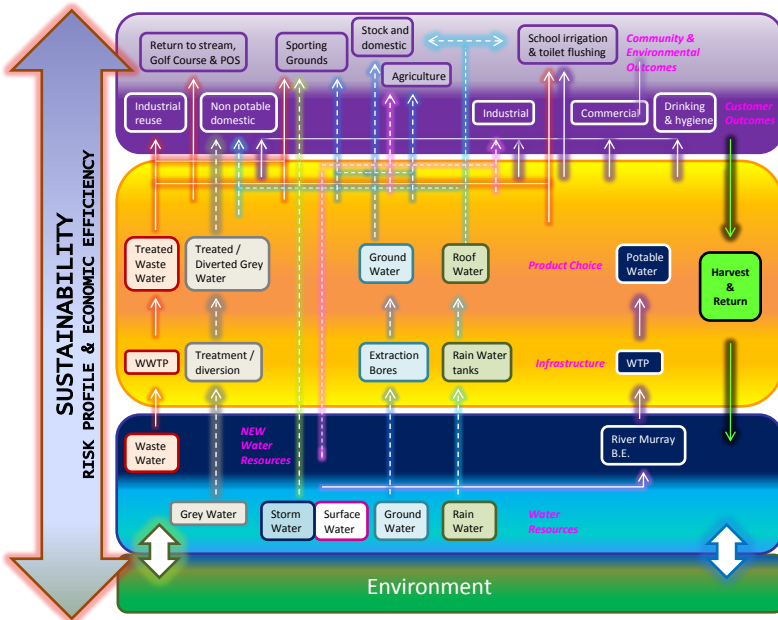
- ❖ A holistic approach to all water resources
- ❖ Fit for purpose products
- ❖ An appropriate risk profile that recognises what is not anticipated in our current water service approach
- ❖ Endurance – Sustainability across all areas
- ❖ A benefit to broader community - Customer choice and acceptance of product
- ❖ A value proposition – Efficient use of resources
- ❖ Recognition that North East Water does not have a monopoly on the provision of water services



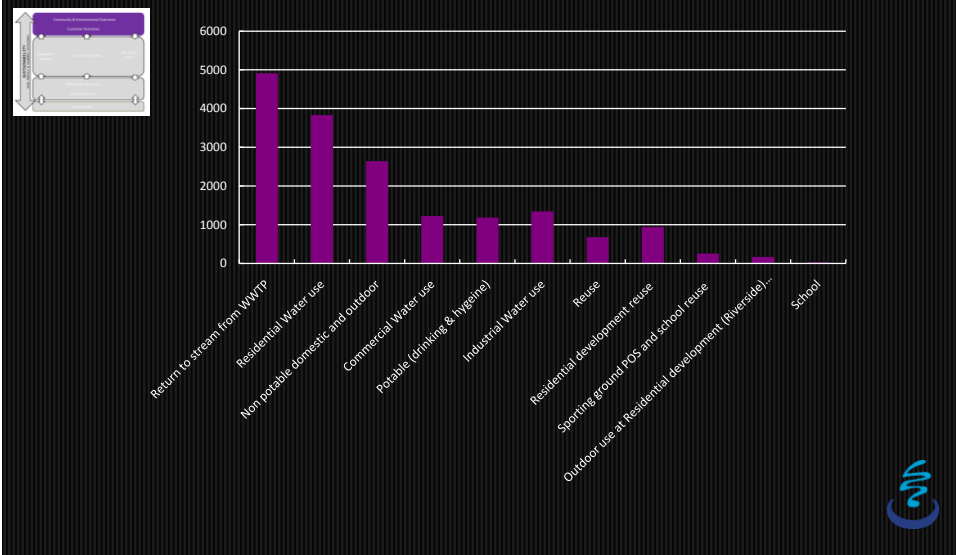
One Resource



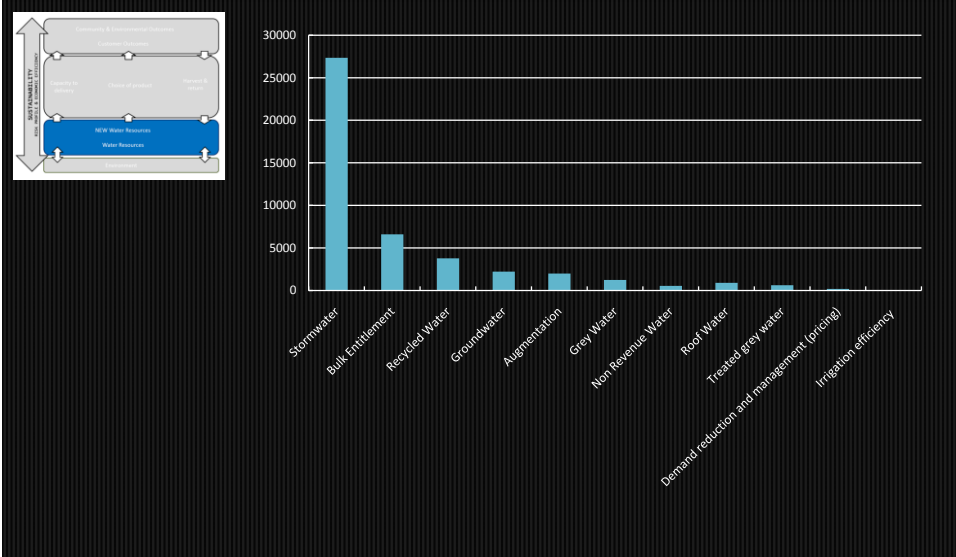
One Resource



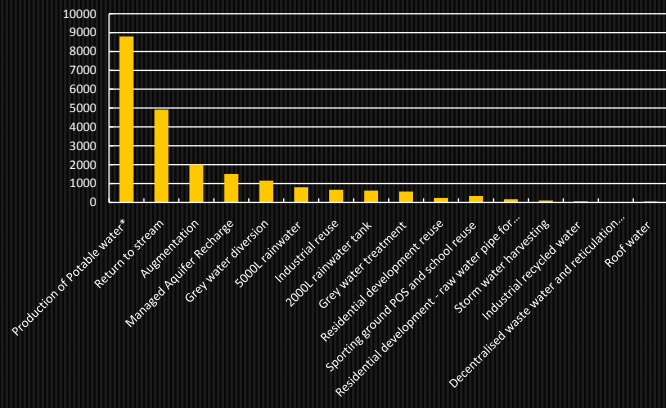
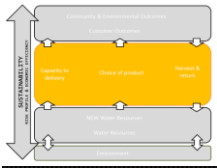
Actual and potential outcomes that may be sought (ML/year)



Actual and potential resources - 2030 (ML/year)

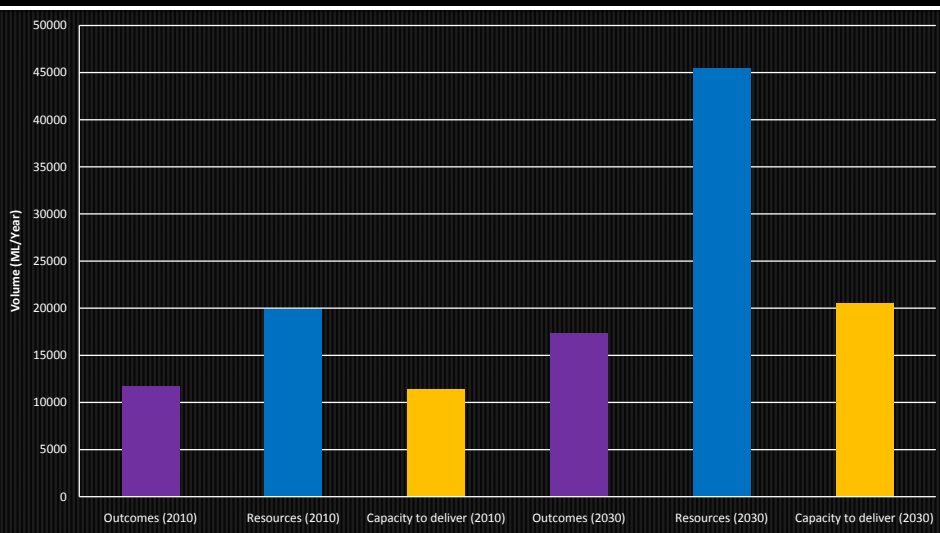


Ability to deliver / capacity required- (ML/year)



* Based on current B.E. only
 ^ No information available at this time

Summary of outcomes that may be sought, ability to deliver / capacity required and potential resources in 2030



What does it mean for you?

- ❖ This approach can work in your business too!
- ❖ Culture of water as a resource
- ❖ Take the time to understand your wateruse requirements
 - ✓ Volume
 - ✓ Quality
 - ✓ When is it required
 - ✓ What options are there for its delivery
 - ✓ Whether you can control it or someone else does
 - ✓ Relative resourcing requirements

Summary

- ❖ Future water management requires a change in culture
- ❖ Sustainable water use requires a holistic approach
- ❖ Resourcing water-needs must focus on outcomes
- ❖ Partnerships and alliances promote more sustainable outcomes